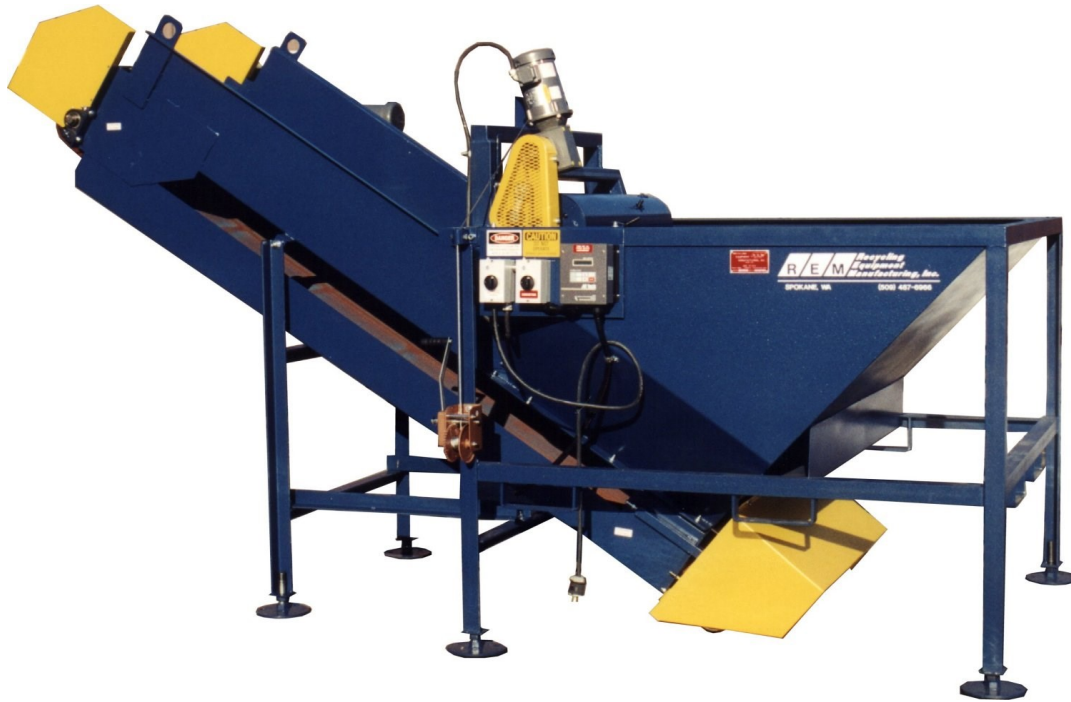




TCH-P Series Paper Transfer Conveyors

From *Recycling Equipment Manufacturing, Inc.*



REM's® Model TCH-P Series Conveyor is another alternative for feeding paper products onto a sorting conveyor. This unit features a metering device (patent pending) utilizing a counter-rotating wheel with fingers that pushes excess material back down into the hopper. This device (patent pending) facilitates an even flow of paper on your sorting line, reducing the conveyor shutdowns due to paper clumps, or having too much material on the belt. The hopper sides are designed to allow the flow of paper onto the in feed conveyor minimizing bridging problems associated with other hoppers. You can feed the TCH-P with a front-end loader, rotating forklift forks, hydraulic lifts (REM HDL-2), or push material from the floor into an in ground TCH-P. Standard lengths are 6', 8', and 10' with a 30" heavy duty rubber belt and 3" cleats. The variable speed drive unit allows the operator to meter the flow of material onto a sorting belt or paper shredder.

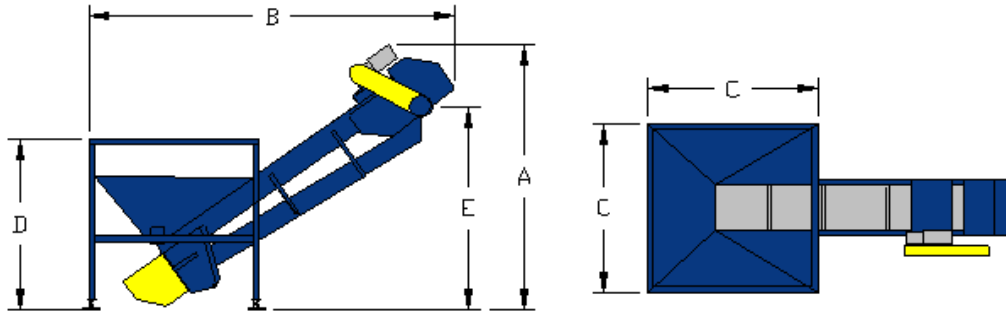
Built tough for many years of service REM's® TCH-P is built with a classic slat bed design featuring a reinforced loading area for minimal belt deflection. We offer standard belt widths of 36" through 60" (in 6" increments), standard and custom lengths, inclines, and discharge heights available in many configurations. REM's® drive packages are sized for each particular application making material transfer effortless! Belt materials and variations are matched to your specific requirements. Bolt together modular conveyor sections (for conveyors longer than fifteen feet) allow for your future growth and expansion, simply add a bolt-on section to extend your conveyor length and discharge height.

To put our model TCH-P Series to work for you, call **1-800-745-4736**.



TCH-P Paper Transfer Conveyor

A Leader in Recycling Equipment Since 1978



Features:

- Field-proven design for high volume, low maintenance, extended life, and easy service.
- Available in standard widths of 36" to 60" in 6" increments.
- Enclosed tail pulley cover with external take-ups for correct belt tracking and tension.
- Enclosed belt and chain guards for user protection.
- 2.5 cubic yard hopper.

Specifications:

- All-steel unitized construction.
- PVC-150 conveyor belting with 3" vulcanized cleats and Flexco 125 Megalloy lacing.
- 8" diameter head pulley and 6" diameter crowned tail Pulley.
- Enclosed sides and bottom of belt return pan
- TEFC motor and drive package engineered to each specific conveyor

Electrical:

- 240/480 volt, three phase
- Electrical components are UL listed
- NEMA-3R (outdoor) enclosure
- Manual starter with thermal overload protection
- Individual motor overload/ short circuit protection

NOTE: NOT TO BE USED FOR OCC, OR SHREDDED PAPER. PAPER MUST BE FREE OF BAGS OR BOXES

Dimensions:	TCH-P6	TCH-P8	TCH-P10
Height (A)	6' 8"	7' 10"	9' 2"
Length (B)	9' 10"	11' 6"	13' 2"
Hopper Width (C)	6'		
Loading Height (D)	5'		
Discharge Height (E)	4' 6"	5' 9"	7' 0"

Options:

- 220 volt, single phase
- 208, 380, 415, 480, or 575 volt three phase
- Magnetic head pulley with reversible steel can discharge-chute
- Self cleaning tail pulley
- Custom lengths and widths
- Variable speed-drive
- In floor pit hopper or drop-in hopper
- Air clutch
- 6" industrial steel casters
- Custom diverter chutes
- If you don't see it, ask us!

LIMITED ONE YEAR WARRANTY

*All dimensions are nominal +/- 1"

*Specifications subject to change without notice, without incurring responsibility to previous units sold

Recycling Equipment Manufacturing, Inc.

PO Box 310
 Priest River, Idaho 83856
 www.remfg.com
 sales@remfg.com
 1-800-745-4736
 Office: (208) 448-4736
 Fax: (208) 448-1786

Sales and Service